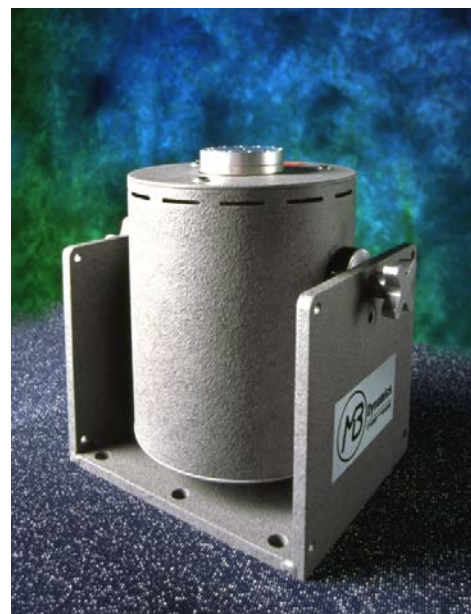




CAL50 Exciter MB500VI & P7000S Amplifiers

MODEL CAL50 EXCITER

- 55 lbs. force pk (245 N pk); 60 lbs. pk (265N), short calibration durations
- 55 g's pk sine acceleration; 60 g's pk, short calibration durations
- 75 g's pk shock accelerations on 100 gram accelerometer
- Can be operated without forced air cooling to achieve 50% of above output
- 1" (25 mm) peak-to-peak stroke
- Moving element dynamic weight, including TIMF = 1.0 lbs (0.45 kg)
- Bare table moving element resonance above 8 kHz
- Stray magnetic field <5.0 gauss 1" (25mm) above table
- Frequency response from 1 Hz to 10 kHz
- Test Instrument Mounting Fixtures (TIMF shown in picture) for calibrating transducers with different mounting threads and for calibrating large or heavy accelerometers and vibration transducers ≤1kg
- 10 foot (3 m) of drive cable
- Trunnion base
- CE Mark



REFERENCE STANDARD ACCELEROMETER (IEPE), 2 Choices

- Frequency Response: 0.5 Hz to 20 kHz, ±10%
- Sensitivity: 100 mV/g, ±10% or 20 mV/g ±10%;
- Measurement Range: ±50 gPk or ±250 gPk
- Resonant Frequency: >40 kHz or 70 kHz
- Temperature Coefficient of Sensitivity: 0.002 %/oF
- Transverse Sensitivity: ≤ 3.0%
- Weight: 7.6 gm or 6.7 gm

AMPLIFIER CHOICES TO POWER CAL50 EXCITER TO RATED PERFORMANCE

Specification	MB500VI Amplifier	MB P7000S Amplifier
Frequency Range, Hz:	DC - 20,000 Hz; usable to >60kHz	1 - 20,000 Hz; usable to >60kHz
Coupling	Switch-selectable: AC or DC	AC only
Amplifier Feedback Mode	Voltage & Current, switch-selectable	Voltage only
Input Power, voltage and line frequency:	100, 120, 200, 220, 240 V; 48-62 Hz	100, 120, 200, 220, 240 V; 48-62 Hz
Input Power, VA:	1,000	650
Output Power, Volts & Amps RMS	25 V RMS and 25 A RMS	35 V RMS and 15 A RMS
Total Harmonic Distortion, %:	<0.5% @ 1 ohm (Voltage Mode)	<0.1%
Signal-to-Noise Ratio:	>100dB	104dB
Dimensions, rack mount:	19" W (482 mm); 14 1/4" D (362 mm); 3.5" H (2HE)	19" W (482 mm); 17 15/16" D (456 mm); 3.5" H (2HE)
Weight, kg	15	12