



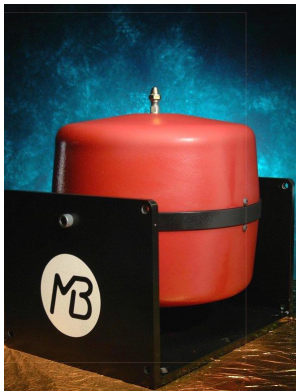
MODAL 110

Exciter System

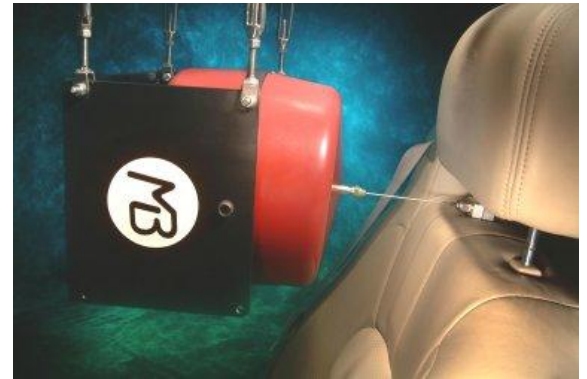


- ❖ **MB's MODAL 110 – longer – lighter – stronger – and RED!**
- ❖ **MB MODAL EXCITERS are the #1 selling exciters in the world -- over 1300 in use worldwide!**

The MODAL 110 delivers 110 lbs force (500N) and 1.5" (38 mm) stroke pk-pk; has twice the force and 50% more stroke than the MODAL 50.



- ❖ **Long Stroke**
- ❖ **Light moving element mass**
- ❖ **Low longitudinal stiffness**
- ❖ **Stiff radial stiffness**
- ❖ **Patented flexure assembly**
- ❖ **Neodymium magnets**
- ❖ **Light-weight exciter**
- ❖ **Thru-hole to attach stinger**



MODAL 110 EXCITER SPECS	MB500VI AMPLIFIER SPECS
<ul style="list-style-type: none"> ❖ Force: 110 lbf peak (500 N) forced-air cooled; 55 lbf pk (250 N) convection air cooled ❖ Force: 75 lbf RMS (350 N) forced-air cooled; 40 lbf RMS (175 N) convection air cooled ❖ Stroke: 1.5" (38 mm) p-p; 1.6" (41 mm) between stops ❖ Max. Acceleration: 830 m/s² peak ❖ Max. Velocity: 1.6 m/s peak ❖ Bandwidth: DC-5000 Hz ❖ Moving element: 0.9 lbs (0.41 kg) ❖ Axial resonance frequency: > 5,000 Hz ❖ Longitudinal stiffness; 30 lb/in (5.2N/mm) ❖ Shaker weight: <55 lbs (25 kg) ❖ Shaker cooling: shop air, with integral air coupling; aux. fan cooling package ❖ Clearance hole through armature for stinger ❖ Compression and piano wire stingers, secured with collets & chuck via 5/16-24 (M8) threads ❖ Overtravel protection ❖ Current limiting shutdown ❖ DC Resistance: 0.4 Ω; AC Impedance: 1.0 Ω ❖ Options: Accessory Kit & Cooling Unit ❖ Continuous Operation: 5 – 35 degC; <85% RH ❖ CE Mark 	<ul style="list-style-type: none"> ❖ Linear amplifier design for high fidelity, low noise (50% efficient); convection cooled ❖ Frequency range; DC-20 KHz; usable to 50 KHz ❖ AC or DC coupled, separate BNCs ❖ Current feedback and voltage feedback, external switch selectable ❖ Output power: 625 VA; 25 VRMS max. voltage; 25 ARMS max. current, 35 A peak ❖ Output connector: 3-pin AMP, mates to shaker ❖ Output current measurement, BNC ❖ Over-current, over-voltage shutdown protection ❖ Over-temperature protection ❖ Internal DC Supply: 42VDC and 20ADC ❖ Signal-to-noise: >100dB THD: <0.1% ❖ Options include: set-up & monitor with PC via Ethernet; shutdown via TTL or contact closure; remote monitoring of MODAL 110 temperature ❖ User-adjustable current and voltage trip limits ❖ Input power: 100, 110, 120, 200, 220, 240V; 48 - 62 Hz (1.0 KVA); in-line fuse protection ❖ Sig. IN for max OUT: ±3Vpk; also ±1, 5, 10Vpk ❖ Input Impedance: >10kOhm ❖ 19" rack x 3½"H (89mm) x 14¼"D (362mm) ❖ Weight: 33 lbs (15 kg) ❖ CE Mark