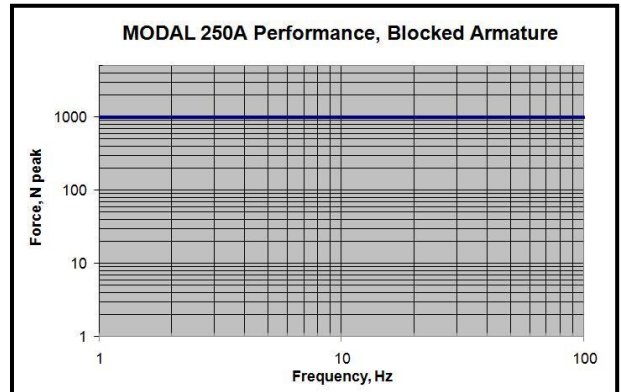


MODAL 250A Modal Exciter

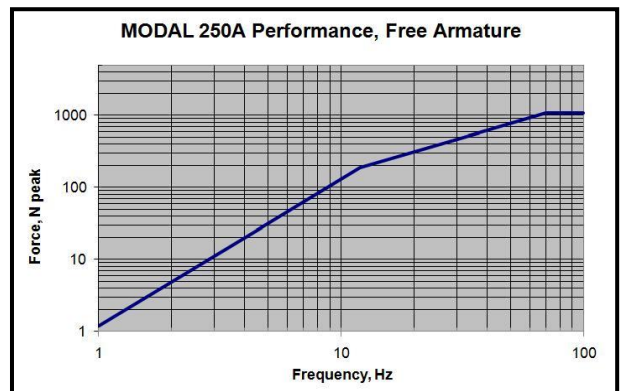


MODAL 250A in Trunnion Base

Blocked Armature: high stiffness reflected by test item back into MODAL 250A and no movement of MODAL 250A body. A measure of low frequency force output



Free Armature: no stiffness reflected by test item back into MODAL 250A and no movement of MODAL 250A body. A measure of low frequency force output



MODAL 250A Technical Specifications (Flexures for Armature Guidance)

Force Output with Forced Air cooling
Force Output with Ambient Air cooling
Stroke
Velocity
Acceleration
Frequency Range
Moving Element Weight
Moving Element Axial Resonance
Driven-Axis Stiffness
Exciter Weight, incl. Trunnion Base
Stinger
Stinger Attachment
Shaker Attachments

Dimensions
Drive Cable Length
Accessory Kit (optional)

Cooling (optional)
Force Sensor (optional)

- * 1,000N pk sine excitation (225 lbf); 650N RMS random (145 lbf)
- * 550N pk sine excitation (125 lbf); 325N RMS random (75 lbf)
- * 50mm peak-to-peak (2 in.)
- * 1.4m/s peak (55 inches/second)
- * 80 g pk continuous sine
- * DC - 4000Hz
- * Less than 1.4kg (3.0 lbs.)
- * Approximately 2,000 Hz
- * 25 pounds/inch (4.4 N/mm)
- * 115kg (250 pounds)
- * 1/4" diameter rod x 400mm long with 10-32 & 1/4-28 threads on ends
- * Chuck attached to shaker armature
- * Floor mount with trunnion base;
suspension mount with multiple turnbuckles
- * 457mm X 355mm Footprint X 436mm High (18" X 14" X 17 3/16")
- * 10m (32 ft.); up to 50m (160 ft.) optional
- * Turnbuckles, wrenches, 1/4" stinger rods x 400mm long (10-32 & 1/4-28 load cell threads); bolt-on-masses for inertia with nuts, bolts
- * Optional portable unit; optional Quiet Enclosure < 60dBA
- * 2,225N (500 lbs.) tension & compress; 10 mV/lb (2248 mV/kN)