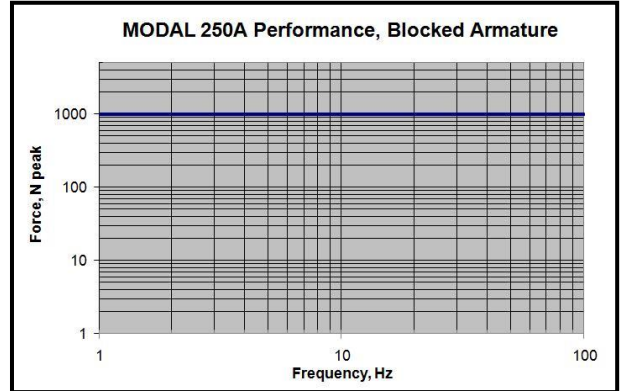


# MODAL 250A Modal Exciter

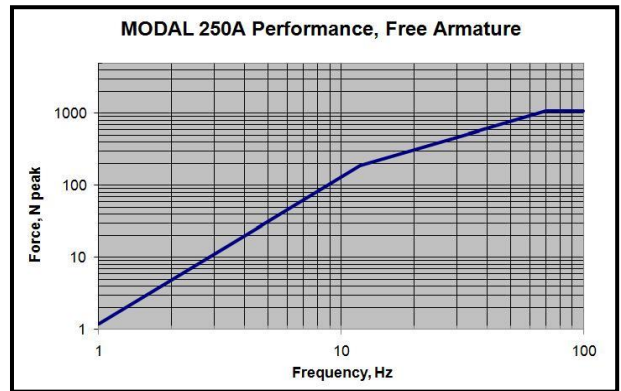


**MODAL 250A in Trunnion Base**

**Blocked Armature:** high stiffness reflected by test item back into MODAL 250A and no movement of MODAL 250A body. A measure of low frequency force output



**Free Armature:** no stiffness reflected by test item back into MODAL 250A and no movement of MODAL 250A body. A measure of low frequency force output



## MODAL 250A Technical Specifications (Flexures for Armature Guidance)

Force Output with Forced Air cooling  
Force Output with Ambient Air cooling  
Stroke  
Velocity  
Acceleration  
Frequency Range  
Moving Element Weight  
Moving Element Axial Resonance  
Driven-Axis Stiffness  
Exciter Weight, incl. Trunnion Base  
Stinger  
Stinger Attachment  
Shaker Attachments

Dimensions  
Drive Cable Length  
Accessory Kit (optional)

Cooling (optional)  
Force Sensor (optional)

- \* 1,000N pk sine excitation (225 lbf); 650N RMS random (145 lbf)
- \* 550N pk sine excitation (125 lbf); 325N RMS random (75 lbf)
- \* 50mm peak-to-peak (2 in.)
- \* 1.75m/s peak (70 inches/second)
- \* 80 g pk continuous sine
- \* DC - 4000Hz
- \* Less than 1.4kg (3.0 lbs.)
- \* >3,200 Hz
- \* 25 pounds/inch (4.4 N/mm)
- \* 115kg (250 pounds)
- \* hex rod x 400mm long with 10-32 & ¼-28 threads on each end
- \* 3 set screws to fix stinger to shaker armature
- \* Floor mount with trunnion base;  
suspension mount with multiple turnbuckles
- \* 457mm X 355mm Footprint X 436mm High (18" X 14" X 17 3/16")
- \* 10m (32 ft.); up to 50m (160 ft.) optional
- \* Turnbuckles, wrenches, hex rod x 400mm long (10-32 & ¼-28 load cell threads); bolt-on-masses for inertia with nuts, bolts
- \* Optional portable unit; optional Quiet Enclosure < 60dBA
- \* 2,225N (500 lbs.) tension & compress; 10 mV/lb (2248 mV/kN)