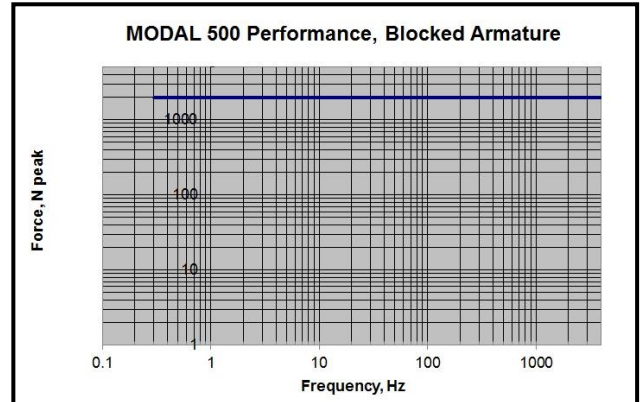


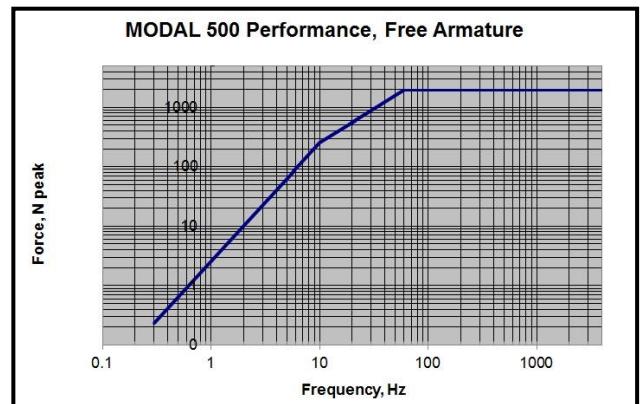


**MODAL 500 in Trunnion Base
(other base designs available)**

Blocked Armature: high stiffness reflected by test item back into MODAL 500 and no movement of MODAL 500 body. A measure of low frequency force output



Free Armature: no stiffness reflected by test item back into MODAL 500 and no movement of MODAL 500 body. A measure of low frequency force output



MODAL 500 Technical Specifications (Flexures for Armature Guidance)

Force Output with Forced Air cooling
Force Output with Ambient Air cooling
Stroke
Velocity
Acceleration
Frequency Range
Moving Element Weight
Driven-Axis Stiffness
Exciter Weight, incl. Trunnion Base
Stinger Chuck
Shaker Attachments

Dimensions
Drive Cable Length
Accessory Kit

Cooling
Force Sensor (optional)

- * 2,000N pk sine excitation (450 lbf); 1,300N RMS random (290 lbf)
- * 1,000N pk sine excitation (225 lbf); 650N RMS random (145 lbf)
- * 50mm peak-to-peak (2 in.)
- * 1.5m/s peak (60 inches/second)
- * 22 g pk continuous sine
- * DC-1000 Hz usable to 4000 Hz
- * Less than 9.3kg (20.5 lbs.)
- * 7.5 N/mm (42 pounds/inch)
- * 200kg (440 pounds)
- * T-wrench key, tighten ½" hex stingers, 27Nm (20 ft-lb) of torque
- * Floor mount with trunnion base; suspension mount with multiple turnbuckles
- * 457mm X 355mm Footprint X 516mm High (18" X 14" X 20 5/16")
- * 10m (32 ft.); up to 50m (160 ft.) optional
- * Turnbuckles, wrenches, three ½" hex stingers X 400mm long with 3/8-16 UNC threads on one end and ¼-28 UNF threads on other; (Optional bolt-on-masses for additional inertia with nuts & bolts)
- * Portable unit; optional Quiet Enclosure < 60dBA; or shop air
- * 2,225N (500 lbs.) tension & compress; 10 mV/lb (2248 mV/kN)